

# K-FLEX® 360 INSULATED PIPE SUPPORT



## DESCRIPTION

Pipe supports create a unique insulation problem. The weight of the pipe being placed in the support can compress the insulation, reducing thickness and creating a thermal short circuit that results in potential condensation formation. The K-FLEX® 360 Insulated Pipe Support is one answer to this problem.

K-FLEX® 360 Insulated Pipe Supports are specifically designed to ensure that the thickness of the insulation is not reduced by the weight of the pipe. The hinged, 360° position-free, rigid polyurethane core has a high compressive load. It is joined by two elastomeric insulation collars which provide

the ideal surface to adhere elastomeric tubular insulation using contact adhesive. The vapor barrier is guaranteed by the outer PVC jacket with overlapping tab system.

The K-FLEX® 360 Insulated Pipe Support system ensures proper insulation thickness and continuity of the vapor barrier. It is available in all common IDs in 1/2" to 1-1/2" wall thicknesses.

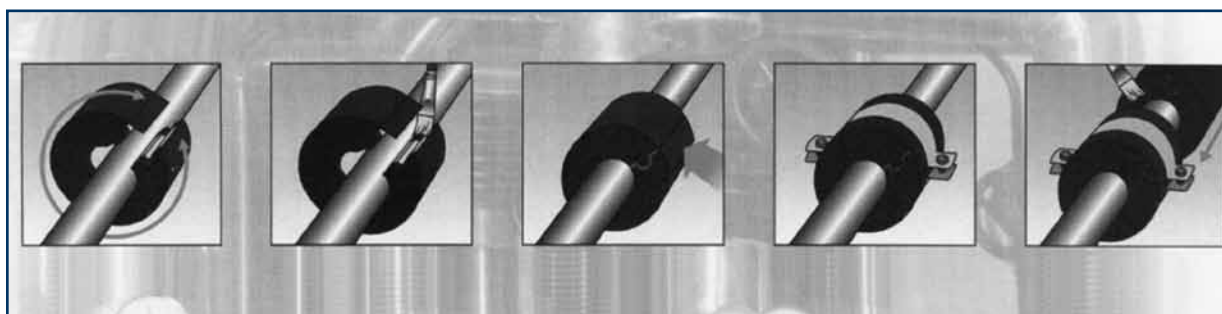
## INSTALLATION

Using the K-FLEX® 360 Insulated Pipe Support system is extremely easy. Simply select the correct ID and wall thickness from the wide range of sizes available to match the pipe insulation being used. Place the

insulating support around the pipe. After applying Contact Adhesive to the grooved seams, pull the release strip in the overlapping tab and seal the support. Fix the metal pipe hanger collar around the support system. Adhere the support to the elastomeric insulating material using Contact Adhesive. K-FLEX® 360 Insulated Pipe Supports provide a quick, reliable alternative to traditionally recommended, more time consuming solutions. K-FLEX® 360 Insulated Pipe Supports eliminate insulation gaps and ensure proper insulation thickness at load-bearing hanger points. This helps to maintain total insulation system integrity.

## PHYSICAL PROPERTIES

Polyurethane Core	Density	5 pcf
Compressive Strength		72 psi
Working Temperature Range		-50°F to 220°F
Thermal Conductivity (k value)		0.25 Btu-in/hr.-ftsq-F
Water Vapor Permeability (max.)		0.10 perm – in.
Dimensional Tolerances	Inside	+/- 0.040"
	Outside	+/-0.100"



- 1 - Place the insulating support around the pipe.
- 2 - Apply the K-FLEX contact adhesive to the half-collars.
- 3 - Seal the support by overlapping the adhesive tabs.
- 4 - Fix your collar around the support.
- 5 - Glue the support to the insulating material.

Made in USA



K-FLEX USA - 100 Nomaco Drive - Youngsville, NC 27596 - toll free 800-765-6475 - fax 800-765-6471 - www.kflexusa.com

©May 2010 K-FLEX USA. K-FLEX CLAD® is a registered trademark of K-FLEX USA. THE GREENGUARD® INDOOR AIR QUALITY CERTIFIED MARK IS A REGISTERED CERTIFICATION MARK USED UNDER LICENSE THROUGH THE GREENGUARD® ENVIRONMENTAL INSTITUTE.

KFDS-0098-0811